



To: All Admission Authorities in Brentwood District
Essex County Council

11th December 2023

Dear Colleague

The Osborne Co-operative Academy Trust is consulting on the admission arrangements for Brentwood County High School for admissions starting in September 2025 onwards.

The proposed admission arrangements include how schools determine who has priority for school places (the “oversubscription criteria”).

The consultation is open from **Monday, 11th December 2023** until **Monday 22nd January 2024**.

If you want to give your views you must submit your response during this period.

We are consulting

- parents of children between the ages of 3 and 18
- other persons in the area who have an interest in the proposed arrangements
- other admission authorities within the local area
- the local authority (Essex)

Brentwood County High School (PAN 210)

What is the proposed change to the oversubscription criteria?

The addition of Lincewood Primary School Basildon to the named feeder schools.

5. Admission of pupils who attend any named feeder primary school. Feeder schools for Brentwood County High are:

- Bentley St. Paul’s CE (V/A) Primary school
- Blackmore Primary School
- Bulphan CE (V/C) Primary School
- Chipping Ongar Primary School
- Doddinghurst C of E Junior School

Telephone 01375 648966

Fax 01375 675814

Email info@osborne.coop

Website www.osborne.coop

Registered office St Clare’s School, Butts Lane
Stanford-le-Hope, Essex. SS17 0NW

Registered details Osborne Co-operative Academy Trust
registered at Companies House, Cardiff.
Company Number 7703865



- Dr. Walker's CE (VC) Primary School
- Great Berry Primary School– Basildon
- Harold Court Primary School– Havering
- Harold Wood Primary School- Havering
- High Ongar Primary School
- Hogarth Primary School
- Holly Trees Primary School
- Janet Duke Primary School- Basildon
- Kelvedon Hatch Community Primary School
- Larchwood Primary School Pilgrims Hatch
- **Lincewood Primary School, Basildon**
- Moreton CE (V/A) Primary School
- Noak Bridge Primary School – Basildon
- Orsett CE Primary - Thurrock
- St. Helen's Catholic Junior School
- St. Peter's CE (V/A) Primary School South Weald
- St. Thomas of Canterbury CE (V/A) Junior School
- Stapleford Abbots Primary School
- Warley Primary School
- West Horndon Primary School
- Woodside Academy - Thurrock

Lincewood Primary School is a new addition to this list.

Full details are available at <https://www.bchs.essex.sch.uk/> and www.osborne.coop

How do I give my feedback?

Please email your comments regarding Osborne Co-operative Academy Trust admission arrangements to admissions@osborne.coop

Alternatively, you may post your response to M Gordea, Head of Governance and Compliance, Osborne Co-operative Academy Trust, Butts Lane, Stanford-le-Hope SS17 0NW

Yours faithfully

P J Griffiths
Chief Executive Officer

Telephone 01375 648966

Fax 01375 675814

Email info@osborne.coop

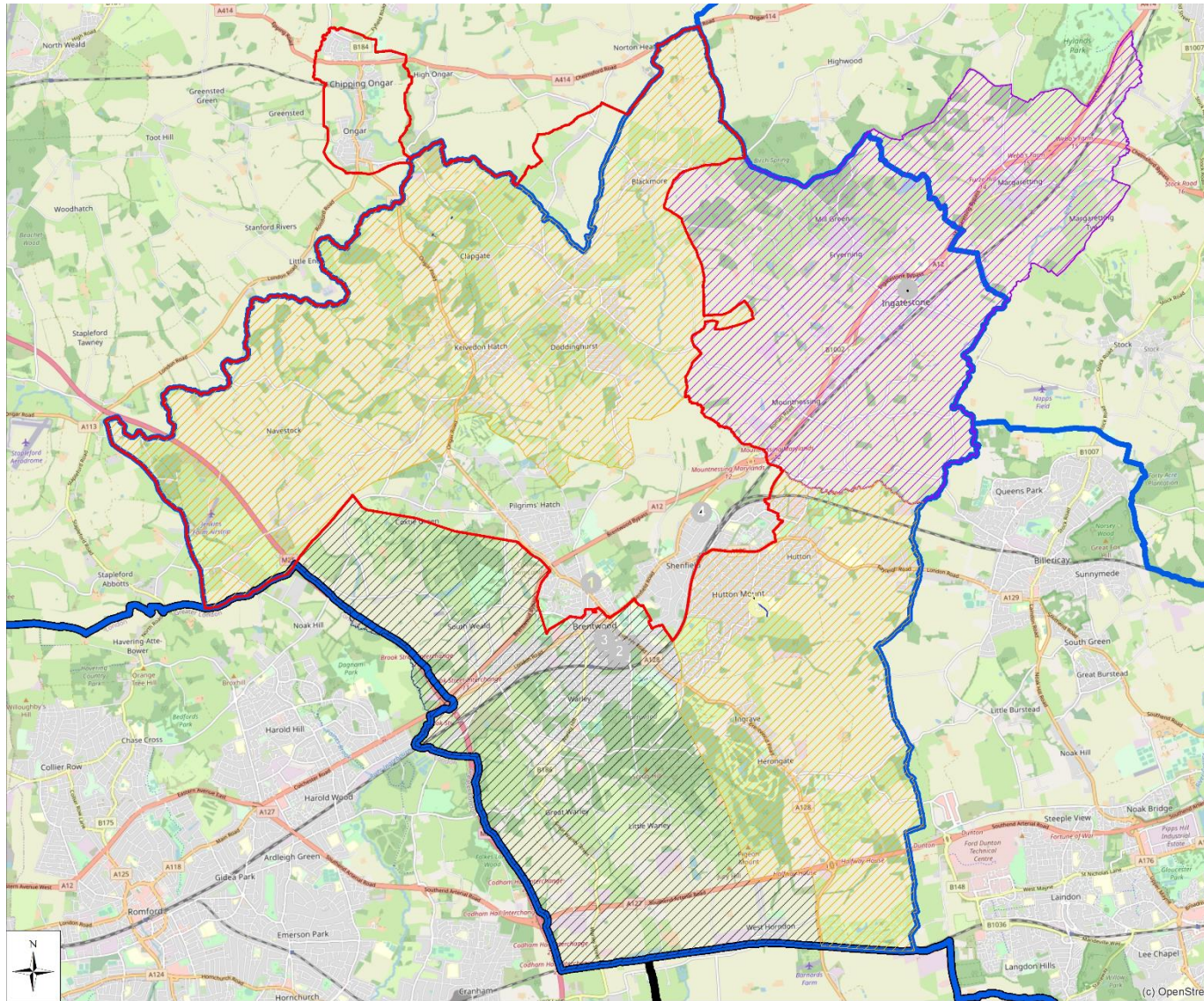
Website www.osborne.coop

Registered office St Clare's School, Butts Lane
Stanford-le-Hope, Essex. SS17 0NW

Registered details Osborne Co-operative Academy Trust
registered at Companies House, Cardiff.
Company Number 7703865



Brentwood C High School



The proposed priority admissions area for Brentwood County High School is hatched in grey, and covers the south west of Brentwood. It is the historic catchment area for Brentwood County High School.